



Counterfeit EEE Parts Detection

**DPACI KNOWS HOW TO EVALUATE SUSPECT PARTS.
SAE AS5553 tells you what to do, but not HOW!**

DPACI has more than 30 years experience inspecting, testing, and analyzing electrical, electronic and electromechanical (EEE) components, including counterfeit analysis.

DPACI owns and maintains the largest database of test reports for EEE components, including electrical and environmental test results, images, specifications and test programs.

DPACI has a complete EEE component inspection, electrical and environmental test, destructive physical analysis and failure analysis facility under one roof to provide quick turnaround.

Typical suspect counterfeit analysis tasks DPACI performs include:

◆ Visual Inspection

Marking consistent with original manufacturer marking (component and packaging)

Dimensional analysis

Physical appearance (oxidation, solder lumps, missing pins/balls, chips/cracks, sanding, other irregularities)

◆ Marking/Blacktopping Tests

Resistance to solvents

Acetone test

◆ X-ray

Real time X-ray with digital image capture

Film X-ray

◆ Acoustic Microscopy

CSAM

◆ Electrical Test

Test capability for all EEE components

◆ Materials Analysis

X-ray fluorescence (XRF)

Energy dispersive X-ray spectrometry (EDX)

◆ Destructive Physical Analysis

Decap/remove encapsulant

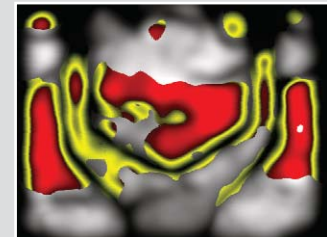
Internal visual inspection with digital capture

Cross-section

SEM

◆ ESD sensitivity

Class 0 test area



DPACI HAS BEEN PROVIDING THIS SOLUTION FOR THIRTY YEARS!



2251 Ward Avenue
Simi Valley, California 93065
Tel: 805/581-9200 • Fax: 805/581-9790

WWW.DPACI.COM